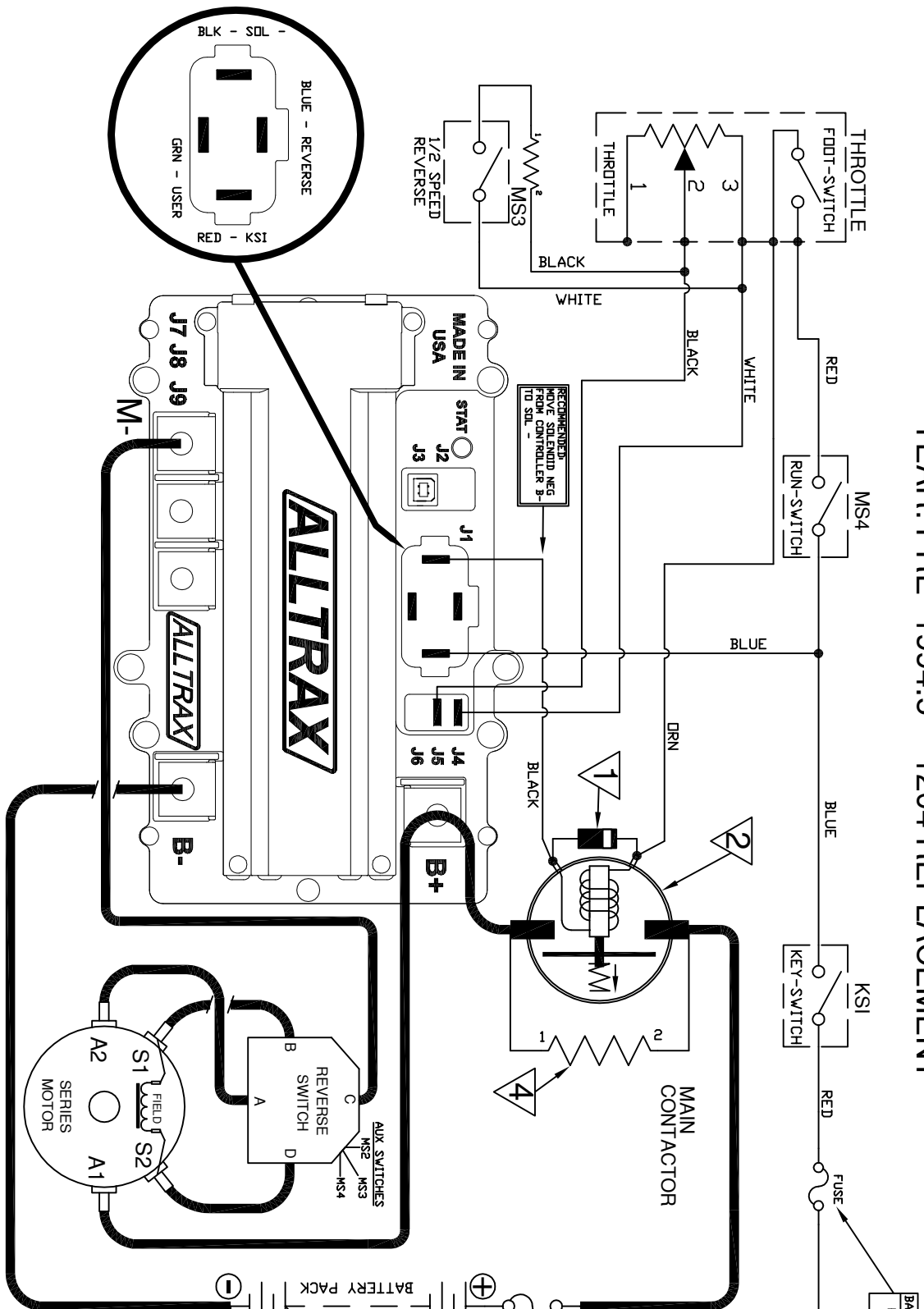


SR to E-Z-GO TXT

YEAR: PRE- 1994.5 -- 1204 REPLACEMENT

PART NO. DOC110-040



BATTERY VDC	12-48V	72V
FUSE VDC RATING	60V	100V

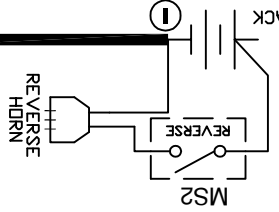
1	DIODE RATING	CONTRACTOR RATING
	1N4001	DEM
	1N5408	DEM
	HR754	400A

2	CONTACTOR RATING	CONTROLLER RATING
	DEM	300A
	200A	300A BR 400A
	400A	400A TD 500A

3	FUSE RATING	CONTROLLER RATING
	ANN250	400A DR LESS
	ANN400	450A DR WIRE

4	VOLTAGE	RESISTOR RATING
	36V	250 OHM 10W
	48V	470 OHM 10W
	72V	1000 OHM 10W

	POWER WIRE RATING	CONTROLLER RATING
	6AWG-4AWG	300A
	4AWG-2AWG	400A
	2AWG-1/0AWG	500A



NOTES:

- * FUSES REQUIRED FOR ALL INSTALLATIONS
- * DIODE REQUIRED ACROSS COILS / RELAYS
- * TOW/RUN SWITCH PREVENTS REGEN WHILE TOWING
- > ASSUMES FOOTSWITCH IS OPEN WHEN THROTTLE OFF WITHOUT NOTICE
- > ALLTRAX RESERVES THE RIGHT TO CHANGE DOCUMENTATION
- > ALLTRAX MAKES NO WARRANTY AS TO THE ACCURACY, SUFFICIENCY, OR SUITABILITY OF ANY TECHNICAL OR OTHER INFORMATION PROVIDED
- > SEE OPERATORS MANUAL FOR MORE INFORMATION

REVISIONS		DATE		APVD	
REV.	ECO.	033016	033016	A	
DWG SCALE: NTS		DRAWN		ENGR	
R CSUK		D.Crockett		033116	

ALLTRAX		1111 Cheney Creek Rd. Grants Pass, OR 97527 PHONE:(541) 476-3565	
TITLE		SR to EZGO Pre-1994 Meddlist Wiring Diagram	
SIZE	DOCUMENT NO.	REV.	
A	DOC110-040	A	
FILE: DWG-SR-EZGO-PRE-1994-WIRE-DA		SHEET 1 of 1	

DO NOT SCALE DRAWING